

# Water Based Pigment & Base Catalog



PVC free bases and  
AZO free pigments  
Color Fastness Chart included



[www.matsui-color.com](http://www.matsui-color.com)



# 301 ECO SERIES INKS

The 301 Eco Series Inks include pigments and bases



## BASES

Bases can be mixed with Neo Pigments, Glow Color EC Series and any other base to create a unique ink.

### Acrylic

High Mesh 301 Bases are recommended for use with up to 305 mesh.

**Clear 301C**  
**Mat 301M**  
**White 301W**

### Hybrid

Easy Print Bases are recommended for use with up to 230 mesh.

**Easy Print Clear**  
**Easy Print Mat**  
**Easy Print White**  
**Soft Stretch Clear**  
**Soft Stretch Mat**  
**Soft Stretch White**

### High Solid Acrylic

Stretch Bases are recommended for use with up to 160 mesh.

**Stretch Clear**  
**Stretch Mat**  
**Stretch White**  
**Acrylicon Clear**  
**Acrylicon White**  
**Kombat White**



# 301 ECO

## Special Effect BASES

The Special Effect Bases can be mixed with Pigments and Glow Colors. They can also be mixed with the Bases, and with each other.

<b>Flock Adhesive</b>	Adhesive base for direct flocking process.
<b>Foaming Additive</b>	High concentration foam/puff for creating 3D prints.
<b>Foil Adhesive</b>	Adhesive base for flock sheets & foil transfer.
<b>Foil Blocker</b>	Protects undersired areas from foil adhesion.
<b>Glitter Base</b>	Penetrates into fabric leaving glitter flakes exposed.
<b>Gold Shimmer 620</b>	Blended with Neo Pigments to create bright metallic colors.
<b>High Density</b>	Available in clear and white for a raised cube effect.
<b>Navi Powder</b>	Chameleon effect pigments.
<b>Pearl Base</b>	Blended with Neo Pigments to create pearlescent colors.
<b>Reflectalite</b>	Reflective sheets and powders for direct or mixing applications.
<b>Self-Cracking Base/White</b>	Semi-opaque base that creates a crack weathered effect.
<b>Shine Binder</b>	High gloss gel effect.
<b>Silver Shimmer 620</b>	Blended with Neo Pigments to create bright metallic colors.
<b>Under Base Blocker</b>	Base that blocks dye sublimation.

## AUXILIARIES

<b>Fixer-L</b>	Eco-friendly low temperature curing fixing agent.
<b>Fixer WF-N</b>	Eco-friendly fixing agent.
<b>Printgen NTF/Dulling Additive</b>	Used to reduce gloss and tack.
<b>Retarder MG</b>	Extends open time & prevents clogging in screens.
<b>RV Additive</b>	Used to reduce viscosity.
<b>Softener MG</b>	Silicone-like softener that helps improve the hand feel of a print & ink release from screen.
<b>Thickener B</b>	Used to raise viscosity.



# PIGMENTS (NEO COLOR)

Pigments can be mixed into any base and can also be mixed with glow colors for extra brightness



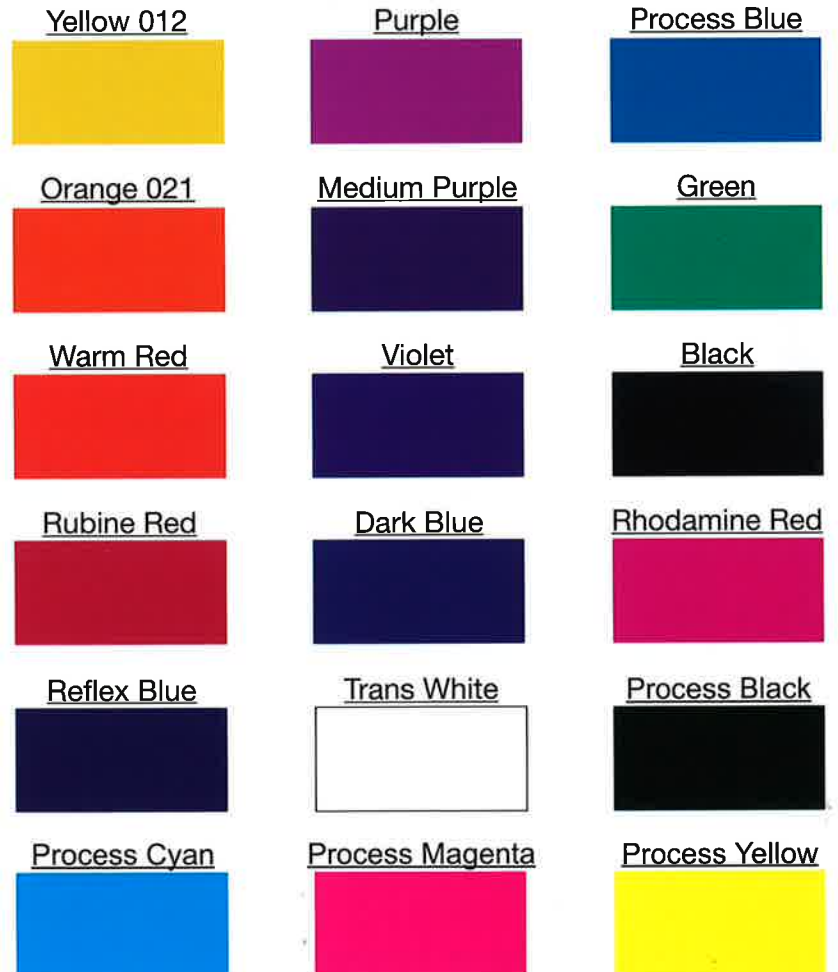
## FLUORESCENT PIGMENTS

(GLOW COLORS EC SERIES)



## INFINITY COLOR SERIES

(WATER BASE READY COLOR MIXING SYSTEM)



# Fastness Properties of 301 Neo Pigments

Fastness	Light Resistance		Water Resistance	Dry Clean Inability 0.5%		Heat Resistance		D.S. Conc. Resistance
	5%	1%		Mineral Spirit	P.C.E	5%	1%	
Identity	5%	1%				5%	1%	
Neo Yellow M3G	7	6	5	5	4	5	5	4-5
Neo Gold Yellow MFR	8	7	5	5	5	5	5	4-5
Neo Orange MGD	4-5	3-4	5	5	4-5	5	5	4
Neo Red MGD	6-7	5	5	5	4-5	5	4-5	2-3
Neo Red MFB	6	4-5	5	5	4-5	5	4-5	3-4
Neo Rose MB	4-5	4	5	5	5	5	4-5	3-4
Neo Pink MB	8	7-8	5	5	5	5	5	5
Neo Violet MFB	8	7-8	5	5	5	5	5	4-5
Neo Navy Blue MB	8	8	5	5	5	5	4-5	5
Neo Blue MB	8	7-8	5	5	4-5	5	5	5
Neo Blue MG	8	7-8	5	5	5	5	5	5
Neo Green MB	8	7	5	5	5	5	5	2B
Neo Black MK	8	8	5	5	5	5	5	5

## Test Method

Light Resistance : Fade-o-Mater 20 hrs. (JIS L-0842)

8 (Excellent) > 1 (Weak)

Water Resistance : 40° C, 4 hrs. (JIS L-0846)

5 (Excellent) > 1 (Weak)

Dry Clean Inability : Mineral Spirit & P.C.E. (JIS L-0861)

5 (Excellent) > 1 (Weak)

Heat Resistance: 180° C x 30 sec. (JIS L-0850)

5 (Excellent) > 1 (Weak)

Chemical Resistance : D.S. Conc. baking at 140° C x 5 min.

5 (Excellent) > 1 (Weak)



1501 W. 178th St. / Gardena, Ca 90248

310-767-7812 / 800-359-5679 / fax 310-767-7836 / info@matsui-color.com